

Recycle at the Helena Transfer Station

- Aluminum cans
- Tin cans
- Corrugated cardboard
- Glass
- Office paper, newspaper, magazines
- Plastic #1 and #2

Recycle at the City of Helena Transfer Station with a City or County Permit. Let the scale operator know you have recyclables and you won't be charged.

Visit the City of Helena's recycling webpage (link on back) to learn about other accepted items that don't have to go to the landfill, and other City and County recycling locations. The webpage has the most updated information.

City of Helena Recycling Fast Facts

Glass recycling goes to Salt Lake City where it is turned into fiberglass insulation.

Cardboard is the largest commodity recycled, with over 900 tons being diverted from the landfill every year. Nine hundred tons equals 1,800,000 pounds, or the equivalent of 45 school buses!

This brochure is printed on recycled paper.
Please recycle when done with it.



Composting

Keep your yard waste out of the landfill and turn it into valuable compost!

Instead of throwing grass clippings, leaves, and branches in your garbage can, compost them in your yard or bring them to the Transfer Station. From here, your yard waste is hauled to the Lewis and Clark County Landfill and mixed with biosolids from the City's Wastewater Treatment Plant. Heavy equipment mixes it until it's transformed into nutrient-rich compost.

This compost is a fantastic addition to your garden, helping your plants thrive. It's available for purchase at the landfill, half-ton minimum.



Reduce waste and help the environment



Location & Hours

1975 N. Benton
Open Monday-Sunday
8:00 AM - 4:15 PM

(406) 447-8086

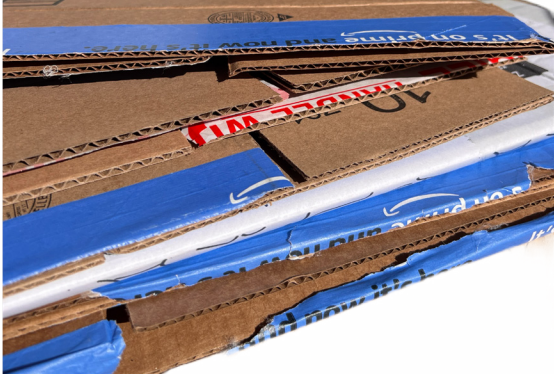
www.helenamt.gov/recycling/



**City of
Helena**

Keep our recycling clean, avoid contamination.

Corrugated Cardboard



Egg carton board

Paperboard



Greasy pizza boxes



Plastic #1 and #2



Hard plastic from appliances and other household goods

Black plastic, even if it says #1 or #2



Packing material, even if it says #1 or #2

Glass



Ceramics

Glass bottles with plastic stoppers still in them

